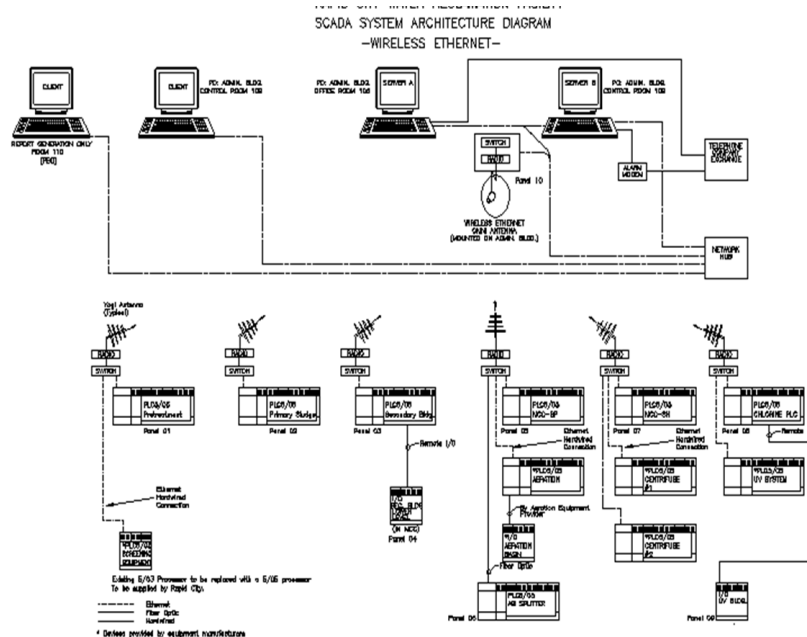


Quality Control & Integration, Inc.

Control, Instrumentation, Telemetry, SCADA, and Automation Systems



SCADA Simplified



**All of the features -
without all the complexity**

800-6th Street N.W. New Prague, MN 50071

Phone: (952) 758-9445

www.qfsi.net

Fax: (952) 758-9661

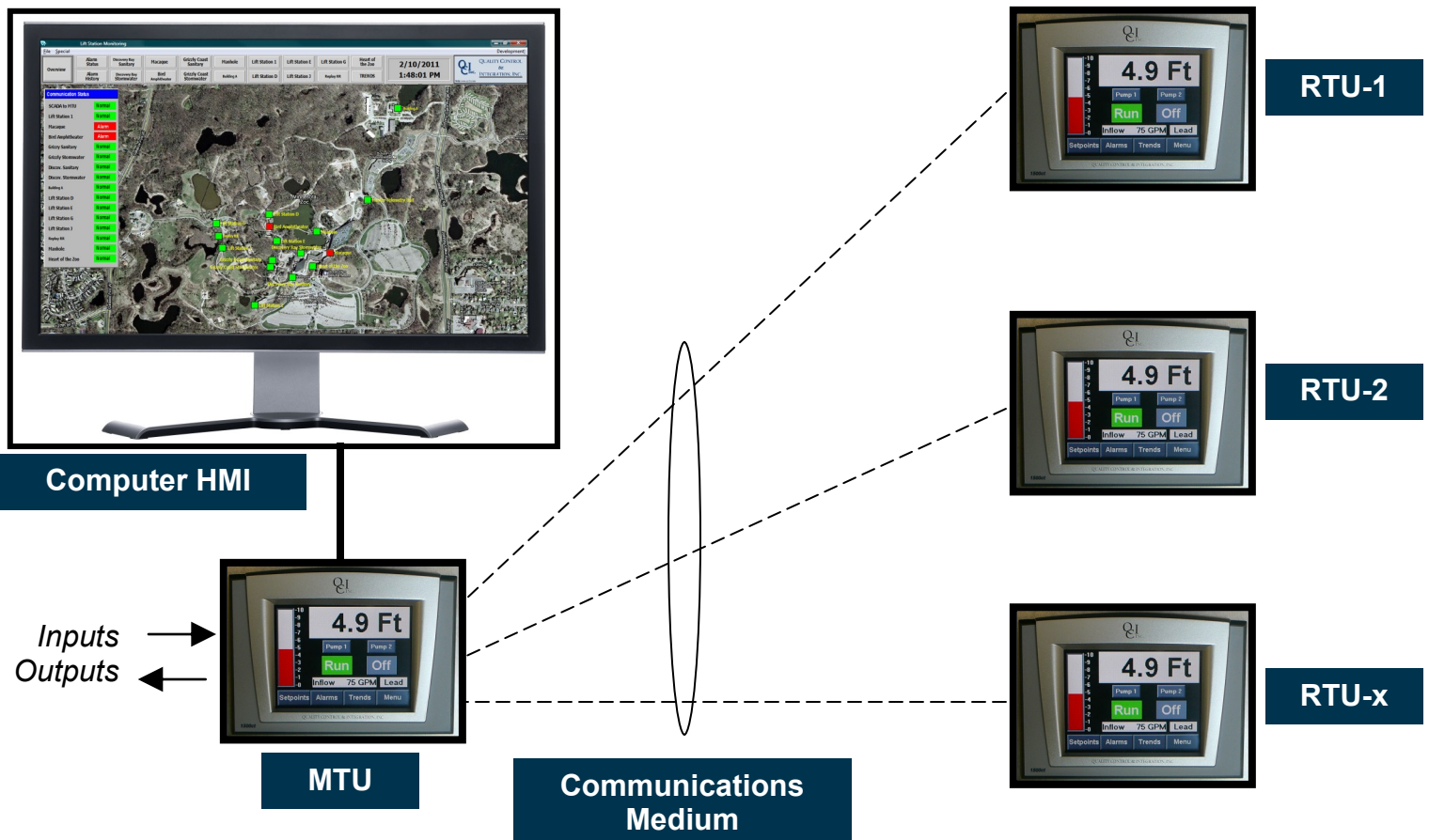
What is SCADA Simplified?

SCADA (Supervisory Control and Data Acquisition) is a great tool for water and wastewater pumping and process operations, including: municipal wastewater and storm water collection, wastewater treatment, potable water distribution, potable water treatment and similar industrial applications. However, many SCADA systems are just too complex or are hard to use. Quality Control and Integration has taken a different approach. We take the best features that SCADA offers and get rid of the complexity (and costs) for things many users do not want or need. We call it *SCADA Simplified*.

What pieces make up SCADA Simplified?

SCADA Simplified systems typically consist of the following elements:

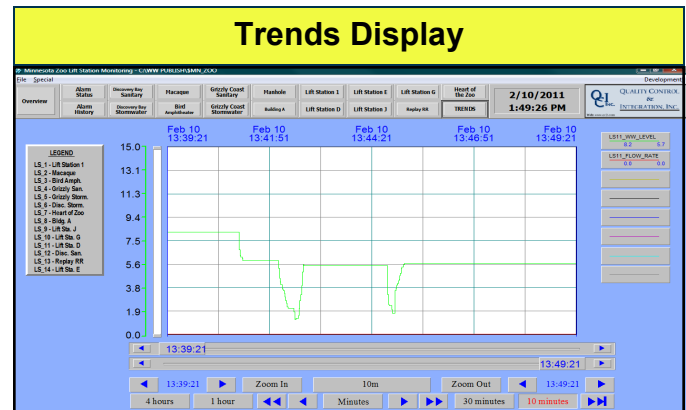
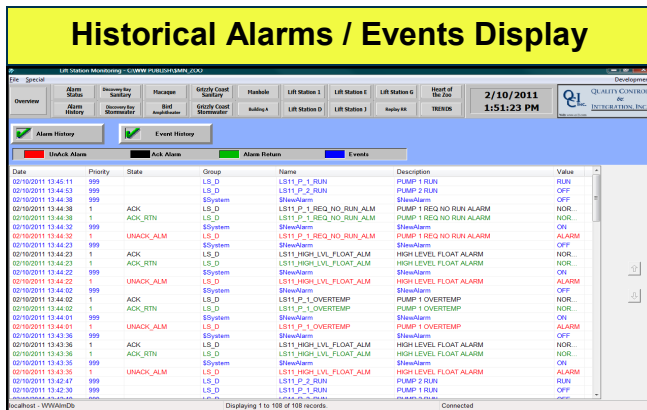
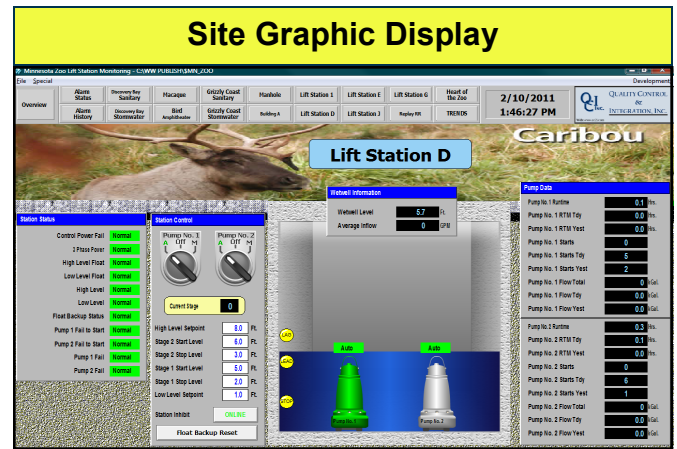
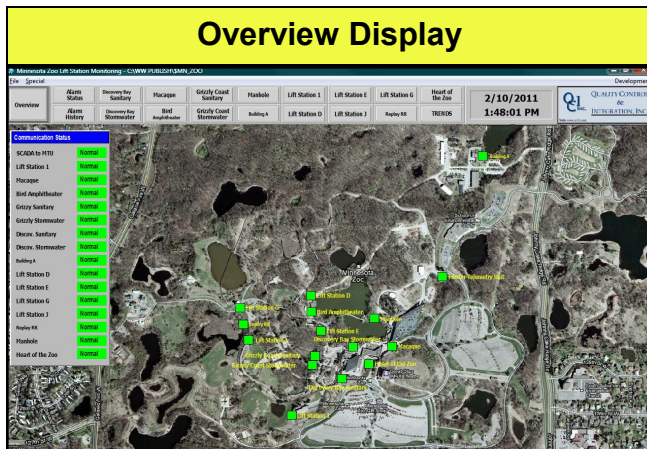
- ♦ Master Computer Workstation with fully configured graphical Human-Machine Interface (HMI)
- ♦ Master Telemetry Unit (MTU)
- ♦ One or many Remote Telemetry Units (RTUs)
- ♦ Communications medium (licensed/unlicensed radio, cellular modem, fiber optic cable, etc.)
- ♦ Instrumentation/sensors, motor starting elements and other components (inputs and outputs)



How is the HMI software configured?

All of our *SCADA Simplified* HMI packages are configured to include:

- ◆ A Map-based System Overview display with access to all displays (a map of YOUR system)
- ◆ Site Graphic displays individually configured to accurately depict YOUR sites. These individual sites are highly customizable and can include manual/automatic selector switches, adjustable control set-point, real-time analog monitoring, real-time equipment monitoring and more.
- ◆ Current Alarms/Events display
- ◆ Historical Alarms/Events display
- ◆ Analog (level, pressure, flow, etc.) variable Trend display



MTU / RTU Hardware and Communications

Quality Control and Integration's 1500ct is often furnished as the MTU and RTUs of the system. The user-friendly, color touch-screen operator interface and input/output configuration make it perfectly suited for most applications. Of course, all common programmable logic controllers can also be utilized. 1500ct MTU/RTU highlights include:

- ◆ Flexible communications with two serial ports (Modbus/DF1 support)
- ◆ 16 digital inputs, 10 relay outputs, 4 digital outputs; expandable
- ◆ 2 analog inputs, 2 analog outputs; expandable
- ◆ Optional Ethernet port

1500ct



SCADA Simplified Applications:



Minnesota Office: Service / Sales
800 – 6th Street NW New Prague, MN 56071

Phone: (952) 758-9445 **www.qfsi.net** **Fax:** (952) 758-9661

For additional information on the above products and all your pumping needs contact:

Pat Malay

Cell: (952) 292-6009

Email: pat@qfsi.net

Kevin Huson

Cell: (952) 292-6008

Email: kevin@qfsi.net

Bill Toennes

Cell: (612) 868-8105

Email: bill@qfsi.net

Cory Malay

Cell: (952) 221-9800

Email: cory@qfsi.net

John Tacheny

Cell: (952) 292-5795

Email: john@qfsi.net

Matt Yorks

Cell: (651) 434-5878

Email: matt@qfsi.net

Brett Marschall

Cell: (952) 290-6295

Email: brett@qfsi.net



800-6th Street N.W.
New Prague, MN 56071
Phone: (952) 758-9445
Fax: (952) 758-9661
Web: www.qc2i.com