

# QualityControl & INTEGRATION

Controls | Instrumentation | Telemetry | SCADA | Automation Systems

## Controls & Automation for Every Application Big and Small

- Controls & panels for all Municipal and Industrial water & wastewater applications
- UL 508A & UL 698A certified shop, approved for the construction and serialization of industrial control panel manufacturing.
- In-house engineering and CAD
- Experience in municipal & Industrial water/wastewater applications
- Experience and ability to utilize any brand PLC, HMI, radio, cellular, or components



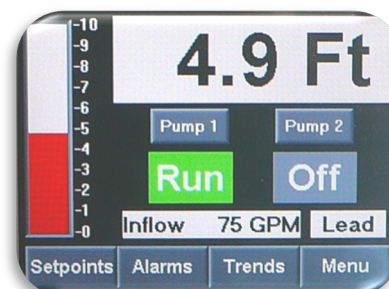
## Custom Control Panel Manufacturing



- QCI's control panels are UL508A/698A compliant / serialized.
- Panels can be customized to meet any design condition, application, or user preference.
- We utilize industry leading products, such as: Siemens, Allen Bradley, Square-D, and Eaton.
- Any parts or products can be used, as requested by a spec or a client.
- With our in-house shop and engineering team we can remodel existing panels to update their operation or build a new panel to fit into an existing system.

## QCI 1500ct Pump Controller

- The 1500ct Controller is a unique and versatile Pump Controller made to meet municipal and industrial demands for a reliable, easy to use, and efficient user operator interface and controller. The 1500ct is telemetry ready with the addition of a radio, cellular modem, or leased phone line.
- The 1500ct allows you to monitor station status, change pump start and stop set points, change high- and low-level alarm set



Find out all we offer at [www.qfsi.net/qci](http://www.qfsi.net/qci)  
800 6th Street N.W. New Prague, MN

points, acknowledge alarms, and view pump run, fail, and performance information remotely.

- The 1500ct is an "Open" control platform supporting industry standard communication protocols like Modbus and DF1. This open protocol approach allows the 1500ct to be readily integrated into most new or existing SCADA systems. Two serial communication ports allow for redundant telemetry networks.
- The 1500ct is also versatile, it can be used to control and monitor up to three constant and/or variable speed pumps in either pump up or pump down mode. This versatility makes the 1500ct able to control even difficult pump applications such as pressure/flow applications.



### QCI H<sub>2</sub>O Client



- The H<sub>2</sub>O Client allows for an easy to use, affordable, and profitable means to sell bulk water.
- Quality Control & Integration has seen an emerging need to produce and distribute an alternative to coin or card operated Bulk Water Vending Systems. Our keypad operated system allows for multiple users to enter a simple PIN code in order to purchase water; saving the hassle and cost of card or coin management.
- This system also allows a city to preset each client's total amount of water they may draw. In addition to these many features the H<sub>2</sub>O Client can be customized to existing structures or can exist as a standalone unit.
- The H<sub>2</sub>O client provides cities and industries an affordable and hassle-free way to distribute their valuable resource.

### Minnesota Office: Service / Sales

**Phone:** (952) 758-9445

**www.qfsi.net/qci**

**Fax:** (952) 758-9661

**For additional information on the above products contact:**

**Pat Malay**

**Cell:** (952) 292-6009

**Email:** [pat@qfsi.net](mailto:pat@qfsi.net)

**Kevin Huson**

**Cell:** (952) 292-6008

**Email:** [kevin@qfsi.net](mailto:kevin@qfsi.net)

**Bill Toennes**

**Cell:** (612) 868-8105

**Email:** [bill@qfsi.net](mailto:bill@qfsi.net)

**Cory Malay**

**Cell:** (952) 221-9800

**Email:** [cory@qfsi.net](mailto:cory@qfsi.net)

**John Tacheny**

**Cell:** (952) 292-5795

**Email:** [john@qfsi.net](mailto:john@qfsi.net)

**Matt Yorks**

**Cell:** (651) 434-5878

**Email:** [matt@qfsi.net](mailto:matt@qfsi.net)

**Ben Sollin**

**Cell:** (612) 803-2701

**Email:** [ben@qfsi.net](mailto:ben@qfsi.net)

**Brett Marschall**

**Cell:** (952) 290-6295

**Email:** [brett@qfsi.net](mailto:brett@qfsi.net)



Find out all we offer at [www.qfsi.net/qci](http://www.qfsi.net/qci)  
800 6<sup>th</sup> Street N.W. New Prague, MN