

Quick Pack Pump Control Panels

QCI's Quick Pack Pump Control Panel represents our standard design panel that can be designed within four to six weeks after receipt of an order and delivered four to six weeks after approval. The panel enclosure is NEMA 3R rated, measuring 48"H 36"W 12"D. It is a free-standing enclosure with 18" skirted legs, 3-point pad-lockable handle, and an aluminum dead-front inner door. These panels can provide control for up to three pumps, in a pump down mode of operation with or without a programmable logic controller.



*Our Panels are ready
when you need them
most and provide you
with the perfect solution
to your control needs!*



We provide startup, full-service needs, and long term service contracts upon request.

Minnesota Office: Service / Sales

800 – 6th Street NW New Prague, MN 56071

Phone: (952) 758-9445 www.qfsi.net/qci Fax: (952) 758-9661

For additional information on the above products and all your pumping needs contact:

Pat Malay

Cell: (952) 292-6009

Email: pat@qfsi.net

Kevin Huson

Cell: (952) 292-6008

Email: kevin@qfsi.net

Bill Toennes

Cell: (612) 868-8105

Email: bill@qc2i.com

Cory Malay

Cell: (952) 221-9800

Email: cory@qfsi.net

John Tacheny

Cell: (952) 292-5795

Email: john@qfsi.net

Matt Yorks

Cell: (651) 434-5878

Email: matt@qfsi.net

Brett Marschall

Cell: (952) 290-6295

Email: brett@qfsi.net



800-6th Street N.W.
New Prague, MN 56071

Phone: (952) 758-9445

Fax: (952) 758-9661

Web: www.qfsi.net/qci

Pump Controls and Automation Systems

**Pump
Controllers**

**MCC & Power
Panels**

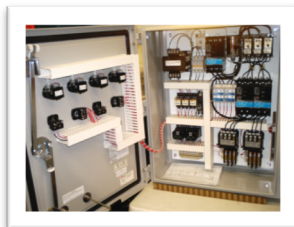
**Process Control
& Automation**

**Various Application
Panels**

QCI's control panels are UL508A/698A compliant / serialized and are of a NEMA 3R, NEMA 4X, or NEMA 12 standard construction. Panels can be customized to meet any design standard. QCI can meet any panel requirement desired by our customers and Engineers, and has routinely designed and built double, single, or two-sided double door control, process, and power panels. We utilize industry leading products, such as: Siemens, Allen Bradley, Square-D, and Phoenix Contact. Any parts or products can be used, as requested by a spec or a client. We have used all forms of pump controllers, PLCs, SCADA devices, radios, and dialing devices in previous panels and can quickly and efficiently adapt our panel model to fit any form of control, telemetry, or SCADA device or application. With our in-house shop and engineering team we can remodel existing panels to update their operation or build a new panel to fit into an existing system.



Duplex Pump Control



Clarifier Control Panel



MCC and Power Panel



Triplex Pump Control



Simplex Pump Control

We are proud members of the following: National Rural Water Association, Minnesota Rural Water Association, Wisconsin Rural Water Association, North Dakota Rural Water Association, and South Dakota Rural Water Association. We are FCC Radio/Telephone general class licensed. Additionally, we are a factory trained Wonderware System Integrator. Our Shop is UL 508A and 698A approved for the construction and serialization of industrial control panel manufacturing.

